

ScanNav Documentation

Web Layers

(update with ScanNav version 14.0)

Index :

INTRODUCTION.....	2
ACTIVATION.....	3
SETTINGS.....	3
CACHE MANAGEMENT:.....	3
CONFIGURING NEW PROVIDERS (ADVANCED USAGE):.....	4
MANAGEMENT OF GLOBAL CONFIGURATIONS:.....	4

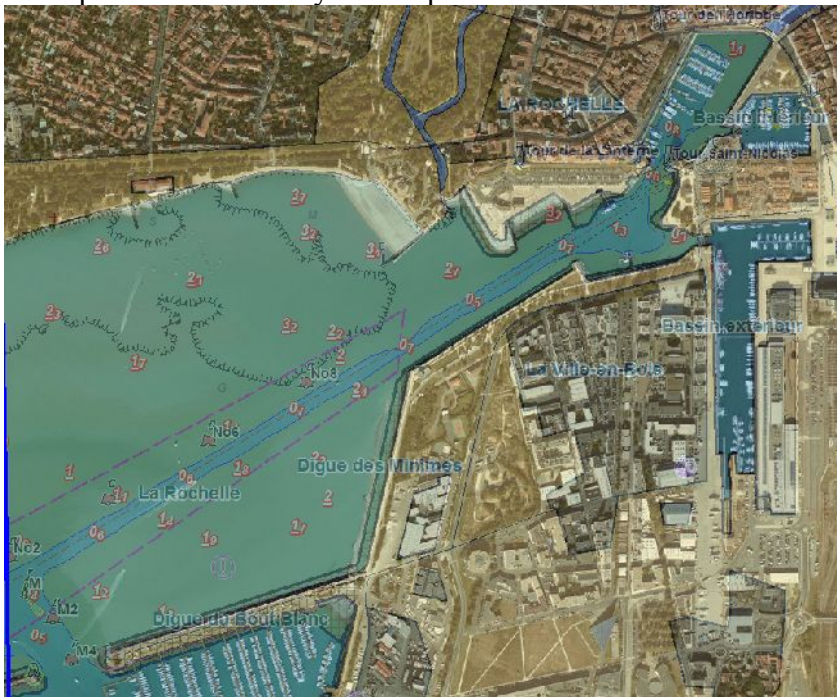
Introduction

This functionality is available starting from version 13.1 of ScanNav.

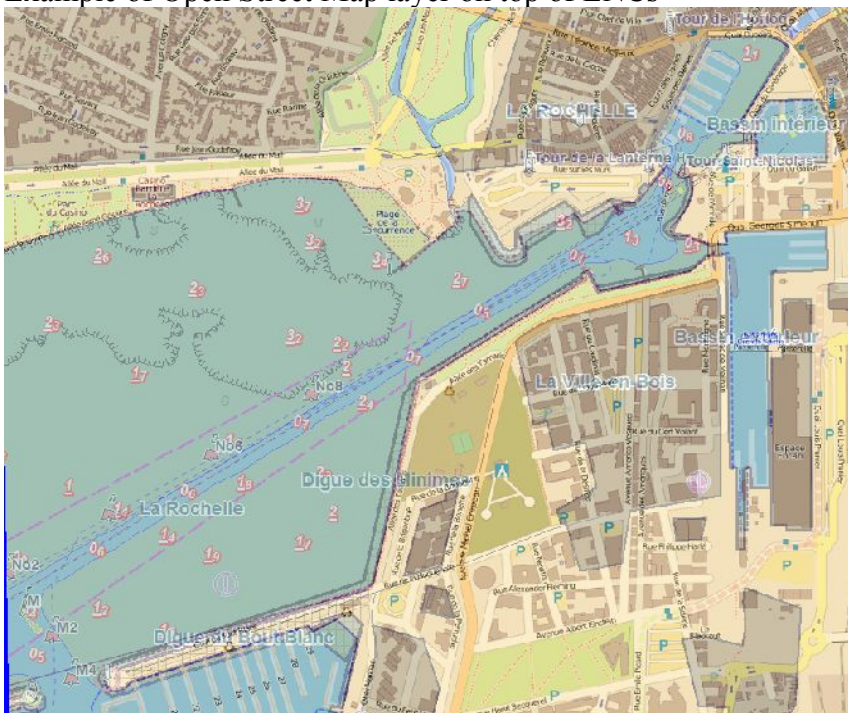
Web layers let you overlap satellite or other views, automatically downloaded from the Web, in transparency over you charts, bringing you various additional information on the location.

Warning: Web layers are not charts and must not be used for navigation.

Example of a satellite layer on top of ENC's:



Example of Open Street Map layer on top of ENC's



Activation

To activate Web layers, use menu “Option” ==> “Web Layers”, or the « <Ctrl>+W » keyboard shortcut to open the control window:



Check «**Active Layer**» to activate the display of the selected layer.

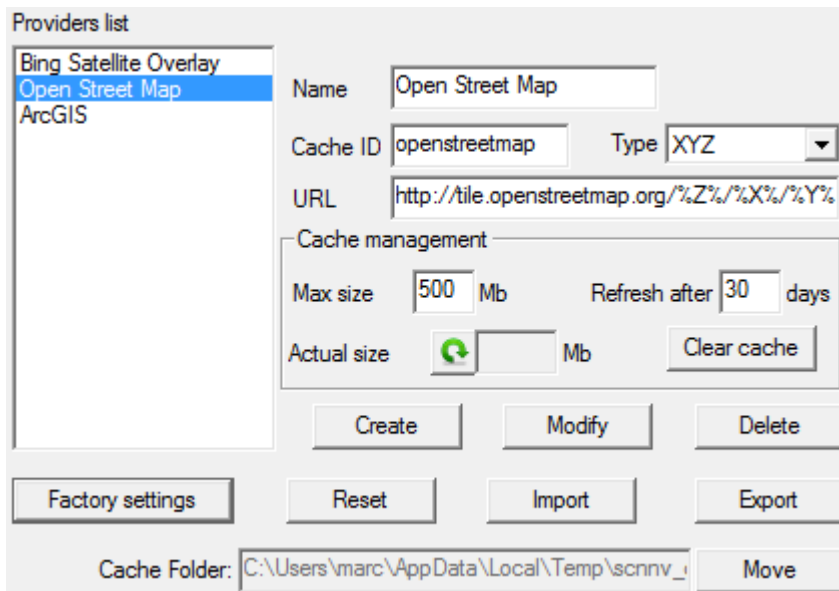
Check «**On Line**» to start downloading layers. The selected layer will then show automatically in transparent overlay on top of your chart as the download completes. Downloaded cells will be cached on disk and can then be used offline, according to you cache settings.

You can tune the transparency of layers with the “**Opacity**” ruler.

«**Quality**» lets you tune the image quality of layers according to the current zoom level. The highest the level, the more precise the layer will be. An intermediate level will enhance the readability of text with larger characters, and also result in lighter weight cells speeding up the downloading/displaying.

Settings


Web layers can be configured in the “Web Layers” tab of ScanNav preferences (accessible through menu “File” ==> “Preferences”).



Cache management:

Max size: Gives (in Mega Bytes) the cache maximum size. If the cache goes over this limit, entries that have not been accessed since the longest period will be removed until the cache size is back under the threshold. A value of 0 deactivates the cache size limit check.

Refresh after: Tiles in the cache downloaded since the given number of days or more will be downloaded again (when “Online” is checked) . If a value of 0 is given, the cache will never be refreshed.

Actual size: Click on button  to show the current size of the cache in Mb (can take time according to the current cache size and/or your hard disk velocity).

To validate any modifications, click on the “**Modify**” button.

“**Clear Cache**” : Click on this button to clear the cache for the selected entry, so as to free space on your hard drive. **Warning**, this operation is instantaneous and cannot be reverted.

The above parameters apply individually per provider.

“**Cache Folder**” : Lets you move the cache root folder. On the opposite from the above parameters, this modification applies to all provider, the cache folder of each individual provider being a subfolder of the root folder.

Warning: when moving the cache folder, the previous entries are neither deleted, nor moved to the new location. It is up to you to eventually clean the previous cache folder manually.

Notice: By default, the cache is located under the Windows temp directory. Clearing the Windows temp files will therefore also clear your cache.

Configuring new providers (Advanced usage):

Note: 3 layers are configured by default at start time. There is no warranty that they keep working in the future, as providers might decide to stop or modify their service access.

Name: Enter the name of the layer as it will appear in the choice list.

Cache ID: This is the name of the cache directory where images will be stored, and must be unique. It will be located under the Windows temporary folder.

Type: To date, 2 types of models are supported:

- « XYZ » : Geo-localization of cells are described according to their world XYZ coordinates inside the URL. (Keywords « %X% » « %Y% » « %Z% » present in the URL template will be replaced dynamically with the appropriate XYZ coordinates of cells to download.
- «Recursive»: Geo-localization of cells are described according to a recursive model of “QuadKey” type inside the URL. (Keyword « %Q% » resented in the URL template will be replaced dynamically with the appropriate Quadkey coordinates of cells to download..

Click on «**Create**» to create a new entry, «**Modify**» to modify the currently selected entry, or «**Delete**» to suppress the currently selected entry.

Management of global configurations:

«**Factory settings**» : Removes all entries and reverts to factory default settings.

«**Reset**» : Undo all modifications by reloading the last validated configuration.

«**Import**»/«**Export**» : Lets you backup or exchange configuration files by exporting/importing the current configuration to/from text files.

NOTICE: Apart from the “Clear Cache” function, no modification will be effective before you click on the “**Apply**” or “**OK**” buttons.