

ScanNav Documentation

Primar ENC's Installation guide

Index:

INTRODUCTION.....	2
IMPLEMENTATION.....	2
DESCRIPTION OF FIELDS.....	3
AUTOMATIC PROCEDURE.....	3
STEP BY STEP PROCEDURE.....	3
OPTIONS.....	4
UPDATE OF SCANNAV'S CHARTS LIBRARY.....	4
MIXING ENC'S WITH DIFFERENT EXPIRATION DATES.....	5
ANNEX 1: DOWNLOADING/INSTALLING NOAA FREE ENC'S.....	5
DOWNLOAD ENC'S FROM NOAA WEB SITE:.....	5
ADD ENC'S TO SCANNAV'S CHARTS LIBRARY	5

Introduction

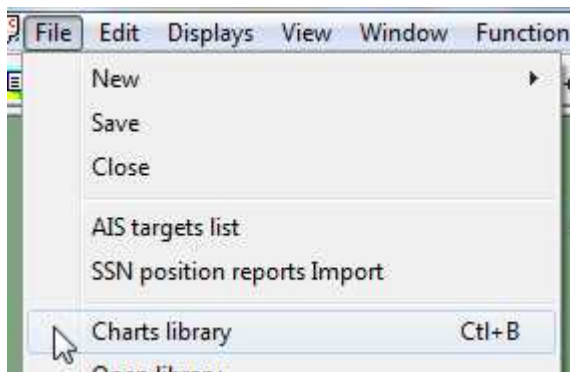
Initial installation and updates of PRIMAR ENC's are completely integrated in ScanNav starting from version 11.5. You can now download and install them in a seamless process, directly from ScanNav.

This documentation only applies to versions 11.5 and above of ScanNav. For earlier releases, please refer to the previous installation method using S63Install and the Primar catalog.

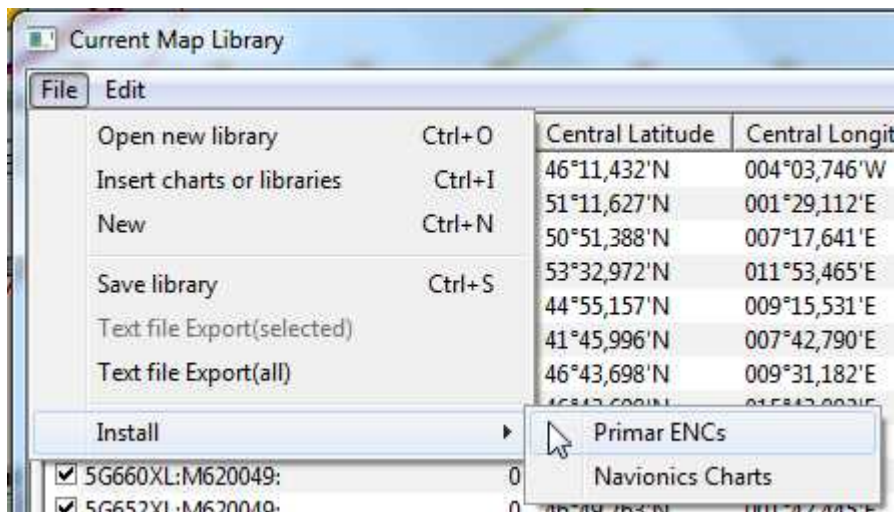
This process doesn't apply to the downloading/installing of the USA free ENC's available on the NOAA web site. Please refer to Annex 1 at the end of this document for the specific procedure.

Implementation

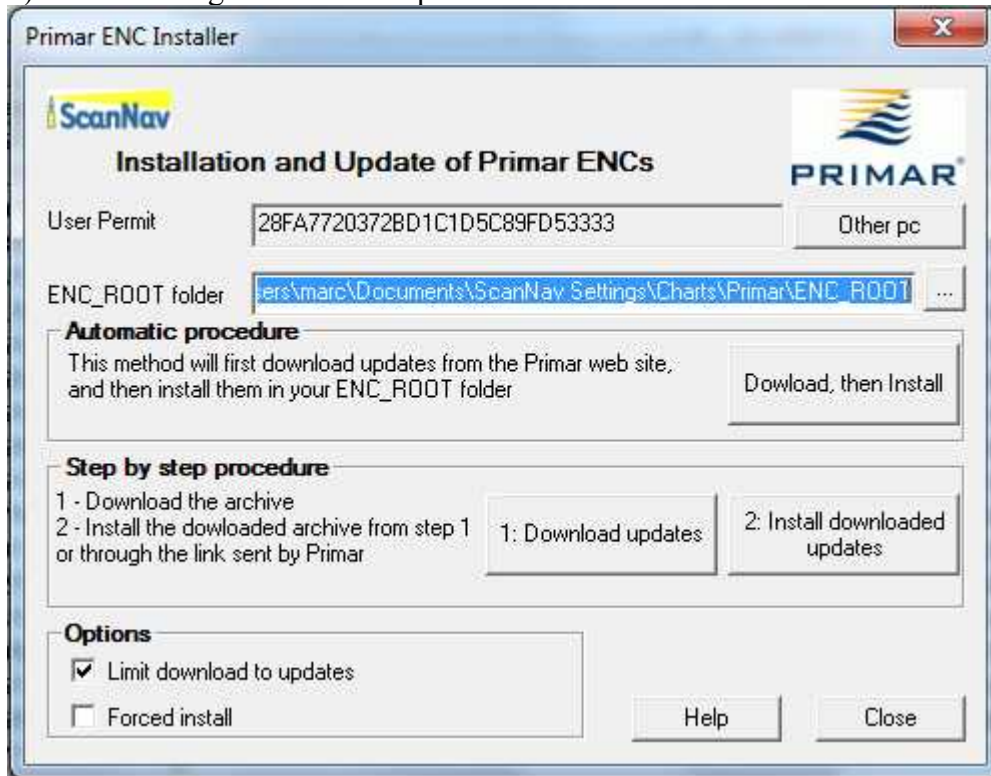
1) Open the "Charts Library" window using button , or menu «File» → «Charts Library»



2) Then, in the «Charts Library» window, use menu «File» → «Install» → «Primar ENC's»:



3) The following window will open:



Description of fields

«**User Permit**» : This is a unique identifier generated from your ScanNav license. It is the reference under which you are registered at Primar, and which is necessary to generate Cell permits to decrypt charts.

Note: for the demonstration version of ScanNav, this field will be empty; you will therefore not be able to order or install Primar ENC's. You may nevertheless ask for a temporary license which will enable the possibility, or test ScanNav with the USA ENC's available for free on the Noaa web site (see Annex 1 at the end of this document for the specific process)

«**Other pc**» button: See chapter «Alternate Download Methods» chapter below.

« **ENC_ROOT Folder** » : This is your installation folder where downloaded ENC's will be copied. A default location is proposed, which is recommended to keep. You may nevertheless change it to another location if you prefer another disk organization. For example, if you already have other Primar ENC's installed, you may use the same ENC_ROOT folder. The complete path must mandatoraly finish by a folder named « ENC_ROOT ». If the folder doesn't already exist, it will be created. It is strongly recommended not to store any other files in this folder.

Automatic procedure

By clicking on button «**Download, then Install**», ScanNav will automatically install the ENC's after downloading them from Primar's site, and will update ScanNav's Charts Library once done.

Step by step procedure

Using step by step, you can dissociate downloading from installation. This lets you keep the downloaded archive, whereas in the automatic method it will be deleted at the end of the installation. You will also use the step by step method if you previously downloaded the ENC's from another source.

- Click on « **1: Download updates** »: ScanNav will propose a location where to save the downloaded archive. You may eventually modify this default location. Downloading starts when you click on «**Save**»
- Click on « **2: Install downloaded updates** »: ScanNav will prompt you for the downloaded file location. If you just downloaded it using the first step, it will be initialized with the right path, and you just need to click on «**Open**» to start the installation process. At the end of the installation, ScanNav will update the chart library with installed cells/updates.

Options

For the initial installation, these options are useless. They take all their meaning when updating or installing new purchased cells to an existing library.

« **Limit downloads to updates** » : If this option is checked, ScanNav will analyze your existing ENC_ROOT folder, so as to download only the updates or new cells compared to the existing. This lets you limit the download band width to the strict minimum. To download a full operational enc set (*), un-check this option. ((*): limited to the cells within the subscription period)

« **Forced install** » : This option will only be useful for trouble shooting damaged ENC_ROOT folder or chart library. It will ignore and overwrite existing files. To be fully operational, you should use this option in conjunction with « Limit downloads to updates » unchecked, so as to consider a complete enc exchange set, not limited to updates.

Update of ScanNav's charts library

At the end of the installation process, ScanNav's chart library is updated with installed cells/updates.

It is important to note that only (and all) the new or updated cells will be added to the charts library. Indeed, ScanNav considers that non impacted cells are already part of the library, which should be the case in most common usages.

If this would not be the case (for example new reset library, or containing another type of charts), you need to re-import the totality of the ENC's using the classic method:

- In the «Charts library» window, use menu « file » → «Insert charts or libraries »
- Browse to your ENC_ROOT folder and choose file « ENC.pmt », then validate with « Open »

All the existing ENC's will be checked and re-imported in the library.

Alternate download methods

If you cannot connect your PC to Internet, it is possible to download ENC's from another connected PC using different methods:

- 1) Using the email notification sent by Primar: Click on the link in the email, and follow instructions on the web site. You may then directly use step « **2: Install downloaded updates** » described above, giving the path of the downloaded zip archive.
- 2) Install ScanNav on another station, and use button «**Other pc** ». Clicking on this button, lets you input another User Permit in the associated field (Make sure to check the validity of the input User Permit before processing). The only accessible action will then be to

download the basket from Primar using «1: Download updates »; all other fields will be grayed out. Once downloaded, transfer the zip file to the destination PC, and process using «2: Install downloaded updates ». Note: in this case the full basket will be downloaded (it is not possible to limit to updates).

Mixing ENC's with different expiration dates

In previous versions of ScanNav, it was strongly recommended not to mix ENC's with different expiration dates so as to limit manipulations of the Cell Permits. You therefore had to create several ENC_ROOT folders.

Using this new installation process, ScanNav combines the cell permits file in an incremental way, so it is now possible to use a unique ENC_ROOT directory for all your encs, whether they are in the subscription period or not.

Annex 1: Downloading/Installing NOAA free ENC's

The above documentation only applies to Primar ENC's.

ENC's downloaded from the NOAA do not have Cell Permits, and their structure on disk is slightly different, which implies a different process described below:

1. Download ENC's from the NOAA web site
2. Unzip archive in an empty folder.
3. Insert file CATALOG.031 in ScanNav's charts library.

Download ENC's from NOAA web site:

Go to the following web site:

http://www.nauticalcharts.noaa.gov/mcd/enc/download_agreement.htm

Read the legal information and click on the button at the end of the page to accept conditions:

On the new page, Click on the link concerning ENC's: « Click [Here](#) to Download NOAA Electronic Navigational Charts. » then follow the instructions. You have the choice of different areas to download, either the entire US ENC's by clicking on « All », or selectively for a given state, or on a cell per cell basis.

Add ENC's to ScanNav's charts library

Once downloaded, unzip the archive in an empty folder (it is strongly recommended not to mix them with Primar ENC's). Then, in ScanNav:

- In the «Charts library» window, use menu « file » → «Insert charts or libraries »
- Browse to the ENC_ROOT folder and choose file «CATALOG.031», then validate with « Open »