

# ScanNav Documentation

## Navionics Charts Installation guide

### Index :

<a href="#">INTRODUCTION.....</a>	<a href="#">2</a>
<a href="#">IMPLEMENTATION.....</a>	<a href="#">2</a>
<a href="#">DESCRIPTION OF FIELDS.....</a>	<a href="#">3</a>
<a href="#">INSTALL OPTIONS.....</a>	<a href="#">3</a>
<a href="#">LICENSING MODE:.....</a>	<a href="#">3</a>
<a href="#">1« Use Navionics Multicard reader »: .....</a>	<a href="#">3</a>
<a href="#">2« Register on Internet »:.....</a>	<a href="#">4</a>
<a href="#">READING FROM:.....</a>	<a href="#">4</a>
<a href="#">INSTALLATION.....</a>	<a href="#">4</a>
<a href="#">UPDATE OF SCANNAV'S CHARTS LIBRARY.....</a>	<a href="#">4</a>

## Introduction

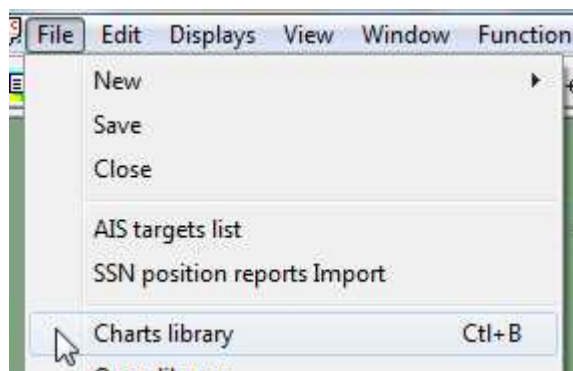
Installation of Navionics charts is completely integrated in ScanNav starting from version 11.5, which guides you through out the process to install in an optimized way and add them to your chart library.

The big new feature is the possibility to install Navionics charts using a standard CF or SD card reader, providing an online registration (limited to 5 pcs). It is still possible to use the Navionics Multicard Reader for an unlimited number of pcs without registration, usage on a pc that cannot be connected to Internet, or older charts that do not support this feature.

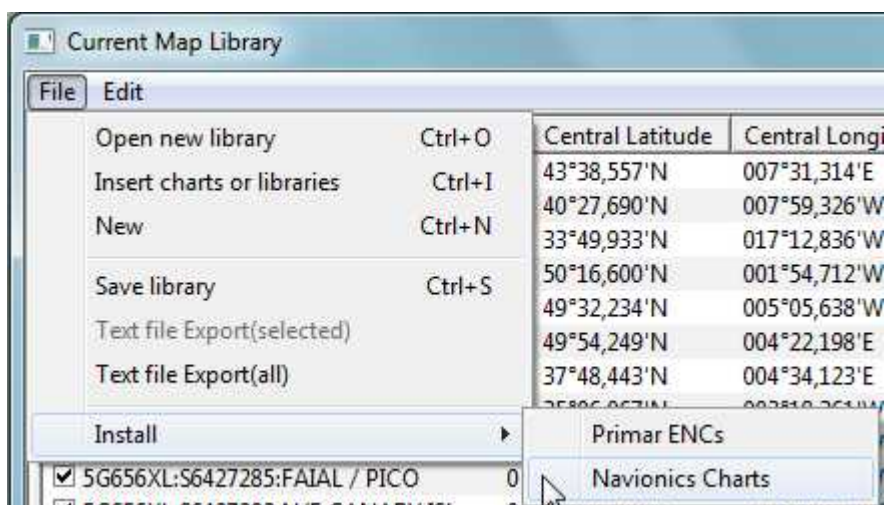
This documentation only applies to versions 11.5 and above of ScanNav, and Navionocs charts released before December 2010. For earlier releases of ScanNav or charts, usage of the Navionics Multicard reader is still mandatory.

## Implementation

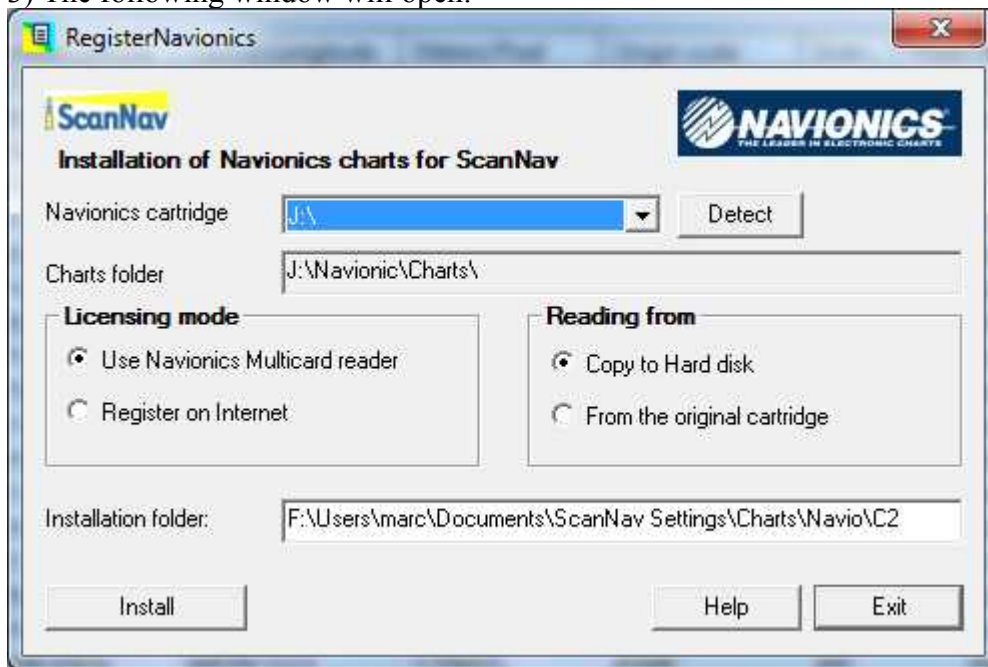
1) Open the “Charts Library” window using button , or menu «File» → « Charts Library »




2) Then, in the «Charts Library» window, use menu «File» → « Install » → «Navionics Charts»:



3) The following window will open:



## Description of fields

«**Navionics cartridge**» : The list of drives containing Navionics charts will be present in this choice list. If no Navionics cartridge is detected, this list will be empty, and it will of course not be possible to go further in the installation. If more than one cartridge is detected, you can choose the desired one by clicking on  to show the full list.

« **Charts folder** » : This non editable field is present for information only, to show the folder where charts are stored on the original drive. In facts, it should always be « [X]:\Navionic\Charts\ », [X] being the drive letter selected in the above list.

« **Installation folder** » : This field lets you enter the installation folder where charts will be installed if the option « Copy to Hard disk » is checked. A default value is proposed, but you may eventually change it to adapt to your own disk organization. It is strongly recommended to use an empty folder (it will be created if it doesn't already exist), and not to store any other files in this folder. ScanNav will refuse to install in an existing folder if it already contains other (different) Navionics charts. By default, ScanNav will create a new folder with an incremental name (in the above example « C2 » because « C1 » already exists and contains charts or other files). The root path name (here « F:\Users\marc\Documents\ScanNav Settings\Charts\Navio ») is memorized between sessions so as to encourage to install charts in a common folder tree.

## Install Options

### **Licensing mode:**

This option determines how charts will be decrypted.

#### 1 « **Use Navionics Multicard reader** »:

This option lets you use charts without the necessity of a previous registration on Internet. For example, if you cannot connect your pc to Internet, or if the chart is too old to support this feature, or you just want to make a test on a given pc, without decrementing the number of registrable pcs.

The use of a Navionics Multicard Reader is mandatory for this option, it will be grayed out if the cartridge is read from a standard CF/SD reader.

Note: the Navionics Multicard reader will need to be present with the original card inserted, at each start-up of ScanNav, even if you chose to copy charts on disk.

## 2 « Register on Internet »:

This option will let you use charts without the need of the Navionics Multicard reader, providing a preliminary registration on Navionics web site.

Registration must mandatoraly be done on the pc on which the charts will be used. The pc must be connected to Internet while installing. The number of stations that can register with the same cartridge is limited to 5 pcs.

Note: This option will be grayed out if the chart is too old to support this feature.

### **Reading from:**

This option will let you choose if ScanNav will read charts from its original support, or on a copy on your hard drive. Copying on your hard drive is recommended to increase performances, especially if you use a slow external reader.

#### «Copy to Hard disk» :

- If you chose to register on Internet as licensing mode, you don't need to have the original chart plugged anymore.
- If you chose to use the Navionics Multicard reader as licensing mode, the original support will still need to be present with the Multicard reader at start-up of ScanNav, and until the first chart is read.

#### «From the original cartridge» :

- The cartridge will need to be present during all the time when ScanNav is running.

## Installation

Once the above options chosen, click on the «Install » button to proceed.

ScanNav will then automatically:

- Register on Navionics web site if option « Register on Internet » is checked (\*)
- Copy charts to their destination folder if « Copy to Hard disk » is checked.
- Add charts to ScanNav's current charts library.

(\*) Your pc must be connected to Internet at this time, if it is the first registration on this pc, or if it has been re-formatted since.

## Update of ScanNav's charts library

At the end of the installation process, ScanNav's chart library is updated with installed charts.

If charts were already registered on this pc, you can limit to re-import the charts in the library using the classic method:

- In the «Charts library» window, use menu « file » → «Insert charts or libraries »
- Browse to the folder containing the charts, select all files with extension «.nv2», then validate with « Open »

All the selected charts will then be checked and re-imported in the library.