
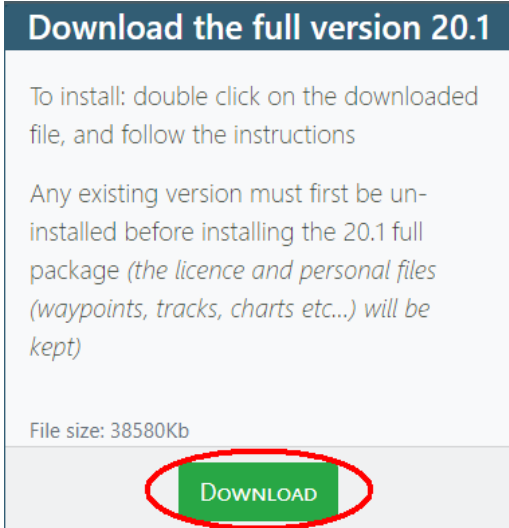


# ScanNav Trial version

## 1 Download the latest version of ScanNav

- Go to the Download page:  
<http://www.scannav.com/GB/download.php>
- On this page, click on button 



**Download the full version 20.1**

To install: double click on the downloaded file, and follow the instructions

Any existing version must first be un-installed before installing the 20.1 full package (the licence and personal files (waypoints, tracks, charts etc...) will be kept)

File size: 38580Kb

**DOWNLOAD**

## 2 Install ScanNav

Once the file is downloaded, double-click on it to execute. It should be in your "Downloads" folder

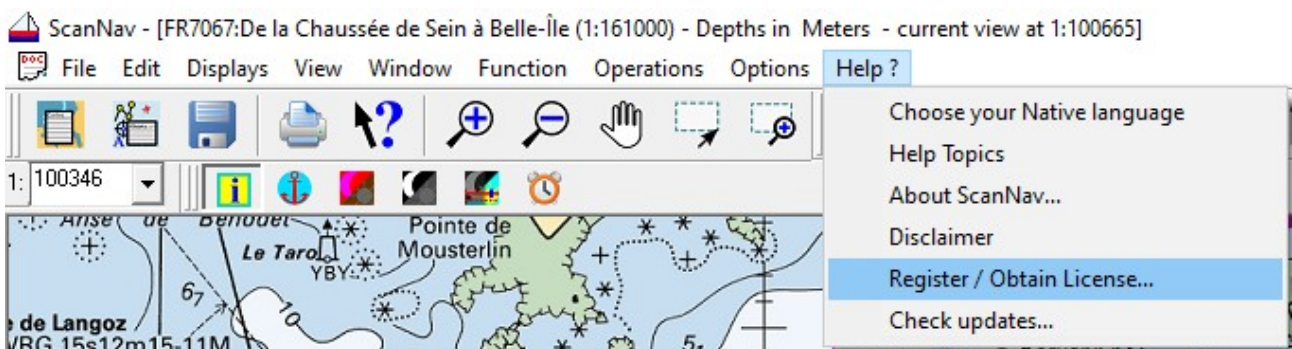
On the following screens, click "next" at each step. However, advanced users may specify some installation options as for standard installations.

## 3 Start ScanNav and apply for a temporary license

Once installed, to launch ScanNav, click on the  icon on the desktop

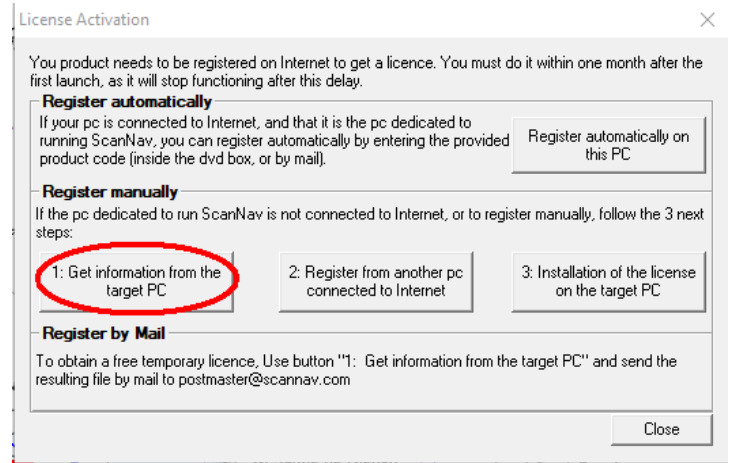
ScanNav will be in demo version, with just a basic shoreline, and a mention "ScanNav - demo version"

Click on entry "Help?" of the top menu, then "Register / Obtain license"

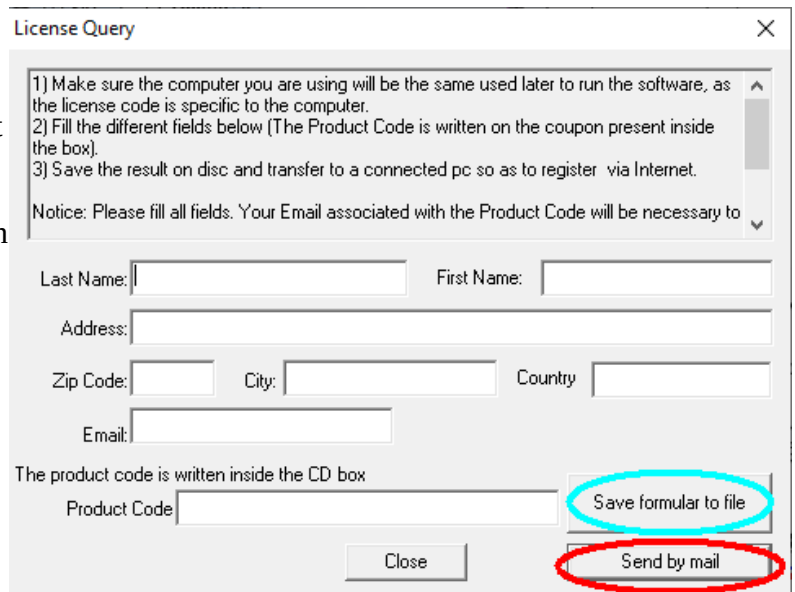


This Opens the following window.

- Click on button "1: Get Information from the target PC"



- Then fill the formula (leave field "Product Code" Empty)
- If your mailing tool is compatible, you can just click on the "Send by mail" button
- Otherwise click on the "Save formula to file", and send the resulting file attached to a mail addressed to [postmaster@scannav.com](mailto:postmaster@scannav.com)



#### 4 Installation of the temporary license

In return, we will send you a temporary license, valid for one month. We can eventually renew it later if more testing is necessary. It will include all optional modules presently available (grib, currents, routing, and AIS)

- Save the attachment on your hard drive. Be sure to remember where you have saved it (preferably in your "Documents" folder for easy retrieval)
- Click on entry "Help?" of the top menu, then "Register / Obtain License" (see screenshot above)
- In the window that appears (same as described above), click on the button "3: Installation of the license on the target pc ..."
- A Windows file chooser appears. Browse to the folder where you have saved the attached file, select it, and click on "Open"
- A message appears to indicate the correct installation of the license. Close this window by clicking on "OK"

- The "About ScanNav" window then appears to indicate the version of ScanNav and the options of the installed license. Check that it fits well, then click on "Close"
- And finally click on "Close" in the "License Activation" window
- Move the map on the screen, the mention "Demo version" should disappear.

## 5 Installation of charts

Note: Make sure to activate the license before installing the charts.


We will include a SnMap chart pack in the temporary license (by default the Shom Atlantic pack, and the small scale World wide planning charts)

As the charts are updated regularly, the download link will be provided by mail when you apply for the temporary license.

Once downloaded, follow the instructions given in the “**SnMap Charts Installation**” documentation, also available online here: <https://www.scannav.com/GB/Doc/DocInstallSnMap.pdf>

Due to specificity of the temporary license, the installation of SnMap is slightly different from the procedure detailed in the documentation. You will need to follow the specific chapter “**Installing from an independently downloaded archive**”

In case you modify your charts library later on, either voluntarily, or by mistake, you may either re-install, or proceed with the generic manual installation of charts in the library:

- Open the charts library window: use first tool button , or menu "File" -> "Charts library"
- In this new window, use menu "File" -> "Insert charts or libraries"
- A file selector opens, browse to the folder where your charts are located.
- Select all files with the ".snmap" extension and click on the button "Open". (to select multiple files, use the <Ctrl> or <Shift> keys and click on files, or just use shortcut "<Ctrl>A" to select all files.

You can also test with Official ENC's, or Navionics charts. Please refer to the corresponding documentation, or online at the following links:

Navionics: <https://www.scannav.com/GB/Doc/DocNavSDK.pdf>

Primar ENC's: <http://www.scannav.com/GB/Doc/DocInstallENC.pdf>

## 6 Documentation

The documentation is available using the "F1" keyboard key, or menu "?" -> "Help Topics". Pay special attention to the "Release Notes" chapter which contains some documentation not yet integrated in the main documentation. You can also refer to the [F.A.Q.](#) page on ScanNav web site for current questions, as well as the [User forum](#) or our [Facebook page](#)