

ScanNav Documentation

Navionics Charts Legacy Installation guide

For Windows XP only

Important notice: As of December 1, 2020, Navionics having changed the Internet activation system, the activation of new charts with versions 21.0 and older , requires contacting Navionics support by email at help@navionics.com. This issue only happens for initial activation of charts and returns **error 301** More info on www.scannav.com/GB/faq.php

The new ScanNav version 21.1 addresses this issue with the integration of the new Navionics component. Please refer to the documentation available here: [DocNavSDK.pdf](#)

However, the new Navionics component does not support the Windows XP target, so the procedure below is still valid for the version of ScanNav for Windows XP, provided that your card is already activated, or that Navionics agrees to activate it.

Index :

- [INTRODUCTION.....2](#)
- [IMPLEMENTATION.....2](#)
- [DESCRIPTION OF FIELDS.....3](#)
- [INSTALL OPTIONS.....3](#)
 - [LICENSING MODE:.....3](#)
 - [1« Use Navionics Multicard reader »:.....3](#)
 - [2« Register on Internet »:.....4](#)
 - [READING FROM:.....4](#)
- [INSTALLATION.....4](#)
- [SONARCHART SUPPORT.....5](#)
- [UPDATE OF SCANNAV'S CHARTS LIBRARY.....5](#)

Introduction

Installation of Navionics charts is integrated in ScanNav, which guides you through out the process to install in an optimized way and add them to your chart library.


The use of Navionics charts no longer requires the Navionics Multicard Reader specific adapter. Just insert the SD or CF support into any compatible reader, and activate it online with the installation procedure (up to 5 installations). The procedure therefore requires to have an Internet connection, just for the time of the installation. Once the chart is installed and activated, the physical support is no longer needed.

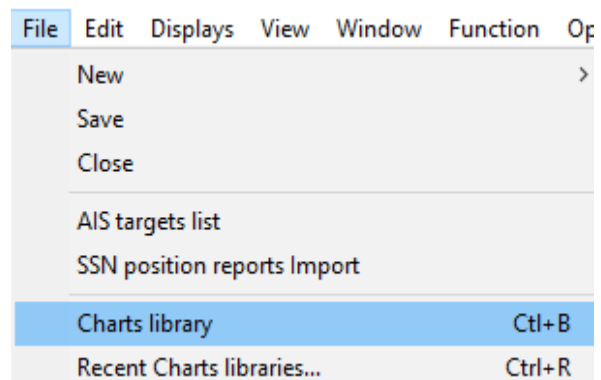
It is still possible under certain conditions to use the Navionics Multicard Reader for an unlimited number of pcs without registration or for an usage on a pc that cannot be connected to Internet. However, Navionics has stopped it's marketing and support, and it is no longer supported starting from Windows 8.1 due to the lack of compatible drivers.

NB: This documentation applies for versions of ScanNav 11.5 and later, and Navionics charts that have been published after December 2010. For earlier versions, the use of the Navionics Multicard Reader is still mandatory, at your own risk. Indeed, these being obsolete, it is strongly advised to update them.

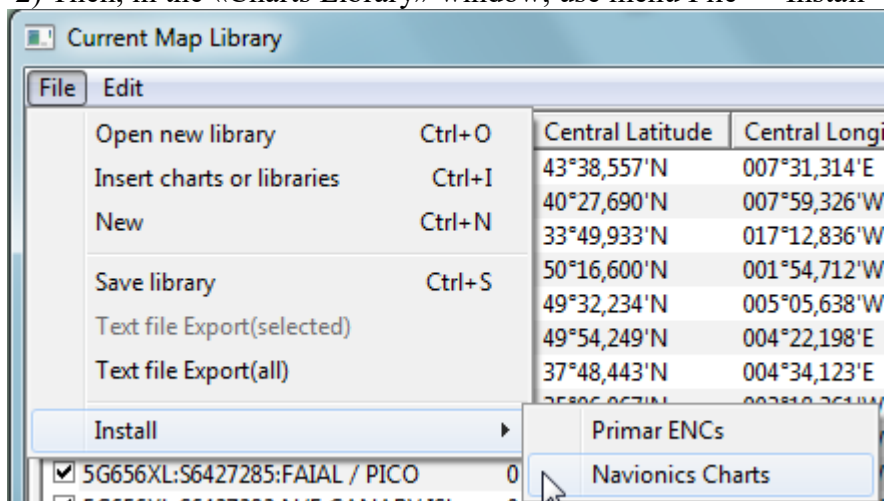
Implementation

1) Open the "Charts Library" window using either

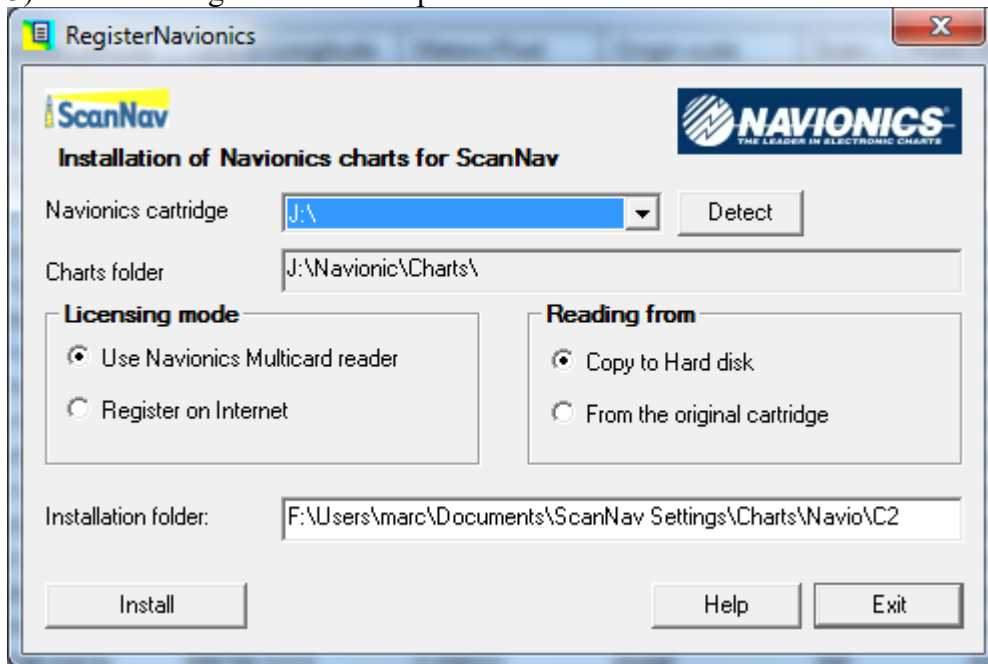
- button  in the tool bar
- or menu «File» → « Charts Library »



2) Then, in the «Charts Library» window, use menu File → Install → Navionics Charts:



3) The following window will open:



Description of fields

«**Navionics cartridge**» : The list of drives containing Navionics charts will be present in this choice list. If no Navionics cartridge is detected, this list will be empty, and it will of course not be possible to go further in the installation. If more than one cartridge is detected, you can choose the desired one by clicking on to show the full list.

« **Charts folder** » : This non editable field is present for information only, to show the folder where charts are stored on the original drive. In facts, it should always be « [X]:\Navionic\Charts\ », [X] being the drive letter selected in the above list.

« **Installation folder** » : This field lets you enter the installation folder where charts will be installed if the option « Copy to Hard disk » is checked. A default value is proposed, but you may eventually change it to adapt to your own disk organization. It is strongly recommended to use an empty folder (it will be created if it doesn't already exist), and not to store any other files in this folder. ScanNav will refuse to install in an existing folder if it already contains other (different) Navionics charts. By default, ScanNav will create a new folder with an incremental name (in the above example « C2 » because « C1 » already exists and contains charts or other files). The root path name (here « F:\Users\marc\Documents\ScanNav Settings\Charts\Navio ») is memorized between sessions so as to encourage to install charts in a common folder tree.

Install Options

Licensing mode:

This option determines how charts will be decrypted.

1 « **Use Navionics Multicard reader** »:

This option only applies if you already own a Navionics Multicard Reader (it is no longer available for sale), and only on versions of Windows prior to 8.1 if you have a CF support. If you use a standard CF/SD reader, the option will be grayed out.

This option lets you use charts without the necessity of an activation on Internet. For example, if you cannot connect your PC to Internet, or if the chart is too old to support this feature, or if you just want to make a test on a given PC, without using a token.

Note: the Navionics Multicard reader will need to be present with the original CF/SD support inserted, at each start-up of ScanNav, even if you chose to copy charts on disk.

2 « Register on Internet »:

This option will let you use charts without the need of the Navionics Multicard reader, providing a preliminary registration on Navionics web site.

Registration must be done on the pc on which the charts will be used. The pc must be connected to Internet while installing, and you can activate up to 5 pcs.

Note: This option will be grayed out if the chart is too old to support this feature.

Reading from:

This option will let you choose if ScanNav will read charts from its original support, or on a copy on your hard drive. Copying on your hard drive is strongly recommended to increase performances, especially if you use a slow external reader.

«Copy to Hard disk» :

- If you chose to register on Internet as licensing mode, you don't need to have the original chart plugged anymore.
- If you chose to use the Navionics Multicard reader as licensing mode, the original support will still need to be present with the Multicard reader at start-up of ScanNav, and until the first chart is read.

«From the original cartridge» :

- The cartridge will need to be present during all the time when ScanNav is running.

Installation

Once the above options chosen, click on the «Install » button to proceed.

ScanNav will then automatically:

- Register on Navionics web site if option « Register on Internet » is checked (*)
- Copy charts to their destination folder if « Copy to Hard disk » is checked.
- The charts will then be opened automatically in ScanNav, after confirmation of the choice of chart type (see chapter "SonarChart Support" below).

(*) Your pc must be connected to Internet at this time, if it is the first registration on this pc, or if it has been re-formatted since.

SonarChart Support

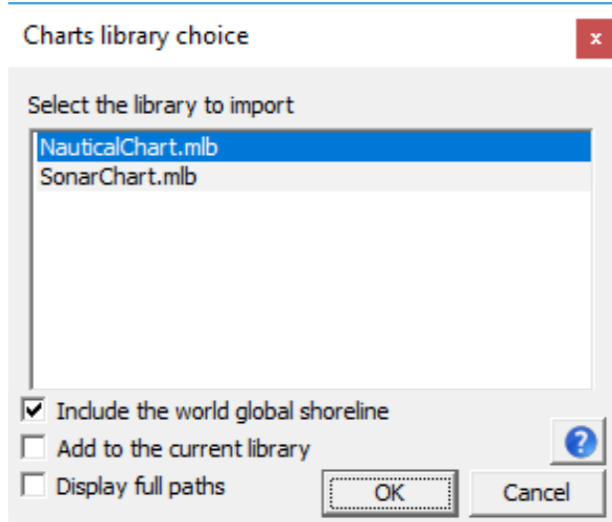
As of version 19.0, ScanNav supports Navionics SonarChart charts. The installation procedure has been revised accordingly, so if you have already installed your Navionics chart with a previous version of ScanNav, you must reinstall it if you want to use SonarCharts.

At the end of the installation, the following window gives you the choice between classic Nautical charts and SonarChart. However, both types of charts are installed, and saved in the library history. It is therefore possible to switch easily from one type to another after installation.

Check the "Add to the current library" option to add the selected library to the existing one instead of resetting to start from a blank library.

Check "Display full paths" to show the full folder name in addition to the file name

Note: It is possible to select several entries, but it is not recommended to use different types of charts on the same area (for example SonarChart and NauticalChart), because ScanNav will switch from one type to the other without control. This possibility is especially useful for loading multiple geographical areas at once.



If the "Include the world global shoreline" option is checked, the default small scale world coastline will be added to the library. It is advisable to keep this option in order to maintain small scale global coverage.

You can then recall this window by using the menu entry "Recent Charts libraries ..." present in the "File" menus of the main window and the Charts library window. You can also use keyboard shortcut <Ctrl+R> ('R' key while 'control' key pressed) to access it even faster.

This same window will then present the last 10 open libraries (all types).

Update of ScanNav's charts library

If you have intentionally or inadvertently emptied your Charts library, and if the activation has already been done before, you can limit yourself to reimporting the charts into the library using the standard procedure:

On version 19.0 and higher of ScanNav:

- In the "Charts Library" window, use the "File" menu → "Open New Library"
- Browse to the folder containing the charts, select one of the 2 libraries "NauticalChart" or "SonarChart" present in the directory, and validate with the button "Open"

Or for any version :

- In the "Charts Library" window, use the "File" menu → "Insert charts or libraries "
- Browse to the folder containing the charts, select all files with extension “.nv2”, then validate with “Open”

All the selected charts will then be checked and re-imported in the library.